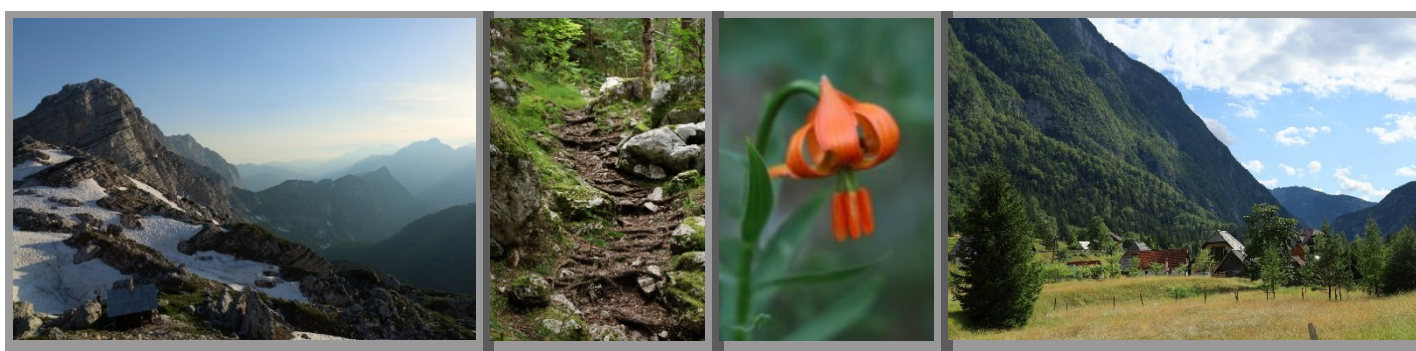


## Botanical and Biogeographical Excursion to Triglav National Park, Slovenia

May/June 2026 – for MSc students

Triglav National Park is a stunning backdrop to learn how environment, geography, and human impacts shape plant communities. Nested within the Julian Alps, Triglav National Park is the only national park in Slovenia, and offers the chance to explore montane and alpine plant communities and their habitats across elevations ranging from ca. 600 to over 2000 m asl. This 11-day field excursion will teach students advanced principles of plant ecology and adaptations in the context of climate, mountain orogeny, land-use change, and conservation. Students will learn how to identify the local flora, recognize important vegetation types, and practice vegetation sampling. Seminar topics will put the region's biota into a broader evolutionary and biogeographical context and discuss topics in more detail. Limited to 16 participants.



### Dates:

Preparation meeting: **5 May 2026**

Associated seminar **18 & 19 May 2026**

Excursion **22 May – 1 June 2026** (Pentecost week)

**Compulsory info meeting: Tuesday 20 January, 9 am in room F03** (Büsgenweg 3, floor -1). Students will learn about all aspects of the excursion, including contents, important dates, and selection criteria. Most importantly, **students must attend this meeting if they want to secure a placement on the trip.**

Those who cannot attend the planning meeting or the associated seminar will not be considered. For questions, please contact Sarah Weil ([sarah.weil@uni-goettingen.de](mailto:sarah.weil@uni-goettingen.de)).

**Cost of the trip:** We anticipate a cost per student of ca. 600 €. This includes all transport to Slovenia and the National Park, accommodation, entry fees, and most food costs. More details will be given at the info meeting.

**Other details:** 6 ECTS Credits (4 SWS). Max. 16 participants. The excursion and associated seminar will be held in English. Limited spaces available for students from other faculties.

